

Agrinote



Pastures for Profit.®



Tribute is a medium-large leaved white clover, with a superior stolon density to leaf size ratio. In Waikato trials **Tribute** has been shown to be tolerant to clover root weevil attack. AgResearch bred **Tribute** from elite germplasm from both New Zealand and Australia.

Tribute is a persistent, highly productive white clover, showing superior out-of-season production, **Tribute** should be the first choice white clover cultivar for all high performance pastures.

Characteristics

Annual Performance (Huia = 100)			
Cultivar	Year 1	Year 2	Overall
Huia	100	100	100
Demand	149	123	136
Tribute	168	137	150
LSD (0.05)	12	11	12

(mean of two trials Woodfield et al. 2003)

Key Features

- ✓ High dry matter production
- ✓ Very high stolon density
- ✓ Suited to a wide range of farm types
- ✓ Very persistent under hard grazing
- ✓ Tolerance to clover root weevil

Phone + 64 3 341 4580, Fax +64 3 341 4581, PO Box 3761, Christchurch,
Email: info@agricom.co.nz, www.agricom.co.nz

Agrinote



Pastures for Profit.®

Annual Performance (Huia = 100)			
Cultivar	Year 1	Year 2	Overall
Huia	100	100	100
Demand	149	123	136
Tribute	168	137	150
LSD (0.05)	12	11	12

Figure 1. Tolerance to Clover Root Weevil in Waikato Dairy Pastures

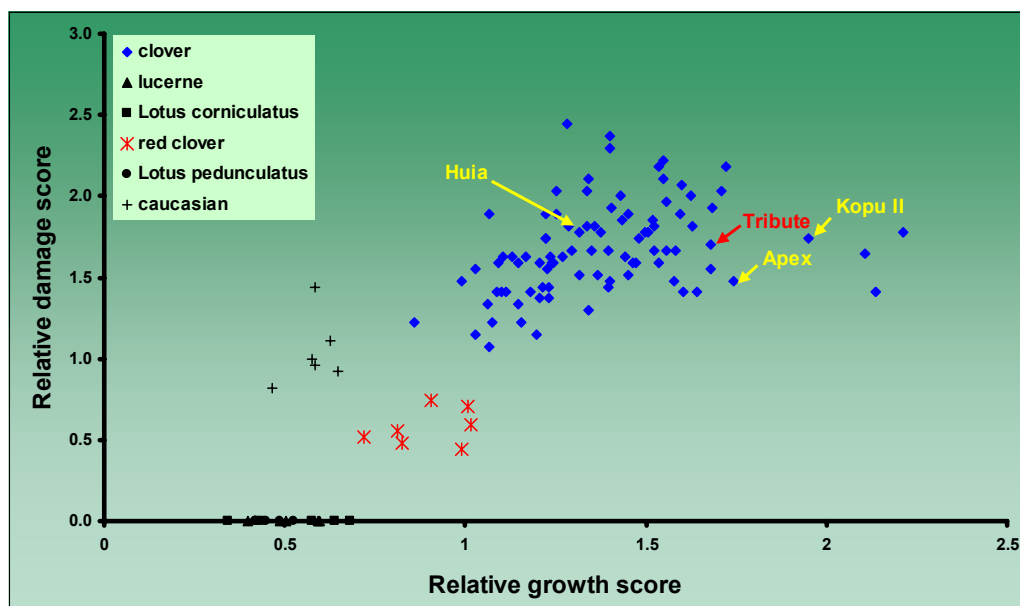


Table 2/3: Annual and seasonal performance of 9 white clover cultivars in three trials under rotational grazing by sheep and in one trial rotationally grazed by dairy cows in the Manawatu

Annual growth of white clover under sheep grazing (relative to Huia = 100) AgResearch, Manawatu				
Cultivar	Year One	Year Two	Year Three	Overall
	%			
Grasslands Tribute	132	127	111	123
Grasslands Huia	100	100	100	100
Grasslands Tahora	108	110	122	109
Grasslands Demand	109	119	123	113
Grasslands Prestige	102	115	111	105
Grasslands Sustain	98	104	110	99
Grasslands Challenge	93	88	113	99
Apex	126	120	125	123
Grasslands Kopu II	107	108	110	105
LSD (0.05)	14	12	13	12

Annual growth of white clover under dairy grazing (relative to Huia = 100) AgResearch, Manawatu				
Cultivar	Year One	Year Two	Year Three	Overall
	%			
Grasslands Tribute	173	120	141	143
Grasslands Huia	100	100	100	100
Grasslands Tahora	141	83	80	102
Grasslands Demand	131	92	114	111
Grasslands Prestige	132	99	91	108
Grasslands Sustain	154	112	98	123
Grasslands Challenge	134	96	125	117
Apex	199	136	112	152
Grasslands Kopu II	193	155	172	172
LSD (0.05)	18	17	15	16

Table 4/5: Annual and seasonal performance of six white clover cultivars under rotational sheep grazing in Canterbury.

Annual growth of white clover under sheep grazing (relative to Huia = 100) AgResearch, Lincoln				
Cultivar	Year One	Year Two %	Year Three	Overall
Grasslands Tribute	119	135	171	129
Grasslands Huia	100	100	100	100
Grasslands Demand	128	135	148	132
Grasslands Prestige	115	137	146	126
Apex	121	127	136	122
Grasslands Kopu II	127	106	120	117
LSD (0.05)	10	11	14	13

Seasonal growth of white clover under sheep grazing (relative to Huia = 100) AgResearch, Lincoln					
Cultivar	Spring	Summer	Autumn	Winter	Stolon* Density (1-5)
Grasslands Tribute	138	129	120	153	2.6
Grasslands Huia	100	100	100	100	100
Grasslands Demand	144	134	123	135	3.4
Grasslands Prestige	140	127	124	123	3.6
Apex	128	117	112	155	2.6
Grasslands Kopu II	122	116	105	128	2.0
LSD (0.05)	11	13	11	14	0.3